

Environmental Information

**eXchange**  
Network

**EN2015**

**eBEACHES Quality Assurance**  
Bill Kramer, *US EPA*

**2015 Exchange Network National Meeting**  
Supporting the Business of Environmental Protection

September 29–October 1, 2015  
Sheraton Philadelphia Society Hill Hotel  
Philadelphia, Pennsylvania

<http://www.exchangenetwork.net/en2015>

# ABSTRACT

This presentation describes how EPA uses Quality Assurance (QA) practices to assure that the Beach Program data and information submitted by Jurisdictions retains their integrity in EPA data systems and when viewed on, or downloaded from, EPA webpages. The presentation describes how, as resources and technology change, EPA and the Jurisdictions have assessed and adaptively managed our QA processes.

# eBEACHES 3 Data Types

- **Location data** (mapped)
  - Beach location (line)
  - Monitoring station (point)
- **Monitoring Results** (WQX/STORET)
  - Pathogen Indicators (and other, e.g. algae)
- **Notification data** (advisory and/or closure)
  - When, how long, reason, possible sources
  - May be triggered by policy or model, not monitoring
- **Prior year** swim season data due to EPA by January 31
  - But BEACON updates on 2-hour cycle
- **Verification** by jurisdictions.
- List of links to Jurisdiction Webpages

# BEACON 2.0 - Beach Advisory and Closing On-line Notification

You are here: EPA Home > Beaches > BEACON 2.0 > Find a Beach

## Find a Beach

About Beacon Find a Beach Reports RSS Generator

Go To: Address or Location Type state, zip, or address Go

Latitude: 46.5888 Longitude: -91.5669

Back U.S. View



# BEACON 2.0 - Beach Advisory and Closing On-line Notification

You are here: EPA Home » Beaches » BEACON 2.0 » Find a Beach

## Find a Beach

[About Beacon](#) | [Find a Beach](#) | [Reports](#) | [RSS Generator](#)

Go To:  Type state, zip, or address

Latitude: 43.7448 Longitude: -87.7059

[Streets](#) | [Imagery](#) | [Topograph](#)



**Blue Harbor Beach**

**Beach ID:** WI252842

**County:** SHEBOYGAN

**Advisories and Monitoring Data** No advisory or closure

**Date:**

[Beach Advisory and Closing Information](#)

[Water Quality](#)

[Beach Profile](#)

[Contact Information](#)

[Additional Reports](#)

Alaska, Hawaii, US Territories

For additional maps of Office of Water program data, see the EPA My WATERS Mapper page.

# BEACON – Beach Advisory and Closing On-line Notification

You are here: [EPA Home](#) » [Beaches](#) » [BEACON 2.0](#) » [Reports](#) » Report

## General

Beach ID:	WI252842
Beach Name:	Blue Harbor Beach
Beach Description:	Blue Harbor Beach
Beach Comment:	-
State:	WI
County:	SHEBOYGAN
Water Body Name:	Great Lakes
Water Body Type:	Open Coast
Beach Ownership/Accessibility:	Public/Public
Access Comment:	-
Status:	Active
Effective Year:	2014
Beach Act Beach:	Yes
Beach Tier:	1

## Monitoring Season and Frequency

Swim Season Length:	105 DAYS
Swim Season Monitoring Frequency:	2 PER_WEEK
Monitoring Reporting Frequency:	-
Off Season Monitoring Frequency:	0 PER_WEEK
Monitored Irregularly:	No
Monitored Irregularly Comments:	-
Water Monitoring Locations:	-

## WQS Criteria Names and Values

No Data Found

## Local Action Decision Procedures



Access Comment: -  
 Effective Year: 2013  
 Beach Act Beach: Yes  
 Beach Tier: 1



### Monitoring Season and Frequency

Swim Season Length: 98 DAYS  
 Swim Season Monitoring Frequency: 4 PER\_MONTH  
 Monitoring Reporting Frequency: 1 PER\_YEAR  
 Off Season Monitoring Frequency: 0 PER\_MONTH  
 Monitored Irregularly: No  
 Monitored Irregularly Comments: -  
 Water Monitoring Locations: -

### WQS Criteria Names and Values

Indicator	Water Type	Measure	Value	Units
ENTEROCOCCI	MARINE	SSM	104	CFU/100 ml

Criteria Comments: This value represents the BNT under the Beach Grant Program



### Advisories

Advisory Reporting Frequency: -  
 Possible Pollution Sources Investigated?: No  
 Possible Pollution Sources: -

### Location

Start Latitude: 41.05703  
 Start Longitude: -73.43547  
 End Latitude: 41.05714  
 End Longitude: -73.43772  
 Beach Length: .124 Mi  
 Source Map Scale: -  
 Horizontal Collection Method: GPS-Unspecified  
 Horizontal Ref Datum Name: WGS84

### Contact Information

### Local Action Decision Procedures

Assess number of complaints of sickness
Compare bacterial concentrations with water quality standards to determine whether standards are exceeded
Notify owner/manager/operator/lifeguards of results
Perform water quality modeling
Post advisory or closing at the beach
Post advisory or closing on the Internet
Post announcement at the beach
Post reopening on the Internet

row(s) 1 - 8 of 8

### Advisories

Advisory Reporting Frequency: -  
Possible Pollution Sources Investigated?: Yes  
Possible Pollution Sources: No (If 'Yes', see the Possible Pollution Sources Report for details)



### Location

Start Latitude: 43.74350287  
Start Longitude: -87.7079636  
End Latitude: 43.74501038  
End Longitude: -87.70558604  
Beach Length: .152 Mi  
Source Map Scale: 100000  
Horizontal Collection Method: GPS  
Horizontal Ref Datum Name: NAD83

### Contact Information

Beach Website Address: -  
Beach Contact Name: -  
Beach Contact Agency: -  
Beach Contact Phone: -  
Beach Contact Email: -



State    
 Year

State : ME, Year : 2013

Beach Id	Beach Name	County	Poll. Sources Investigated?	Poll. Sources Found?	Runoff	Storm	Agri-cultural	Algae	Boat	CAFO	CSO	SSO	POTW	Sewer Line	Septic	Wildlife	Other	Unknown	Pollution C
ME187302	Crescent Beach	CUMBERLAND	Yes	Yes	Yes	-	-	-	Yes	-	-	-	-	-	-	Yes	Yes	-	-
ME712895	East End Beach	CUMBERLAND	Yes	Yes	-	Yes	-	-	Yes	-	Yes	-	Yes	-	-	Yes	Yes	-	-
ME275080	Ferry Beach (Scarborough)	CUMBERLAND	Yes	Yes	Yes	Yes	-	-	Yes	-	-	-	-	-	-	Yes	Yes	-	-
ME399101	Kettle Cove Beach	CUMBERLAND	Yes	Yes	Yes	Yes	-	-	Yes	-	-	-	-	-	-	Yes	Yes	-	-
ME428165	Scarborough Beach	CUMBERLAND	Yes	Yes	-	-	-	-	-	-	-	-	-	-	-	Yes	-	-	-
ME875929	Willard Beach	CUMBERLAND	Yes	Yes	Yes	Yes	-	-	Yes	-	-	-	-	-	-	Yes	Yes	-	-
ME774235	Winslow Park	CUMBERLAND	Yes	Yes	Yes	Yes	-	-	Yes	-	-	-	-	-	-	Yes	-	-	-
ME806573	Hadley Point	HANCOCK	Yes	Yes	-	Yes	-	-	Yes	-	-	-	-	-	-	Yes	Yes	-	-
ME209288	Hulls Cove	HANCOCK	Yes	Yes	Yes	Yes	-	-	Yes	-	-	-	Yes	-	-	Yes	Yes	-	-
ME313199	Sand Beach	HANCOCK	Yes	Yes	Yes	-	-	-	-	-	-	-	-	-	-	Yes	Yes	-	-
ME419870	Town Beach	HANCOCK	Yes	Yes	-	Yes	-	-	Yes	-	-	-	Yes	-	-	Yes	Yes	-	-
ME315104	Goodies Beach	KNOX	Yes	Yes	Yes	Yes	-	-	Yes	-	-	-	-	-	-	Yes	Yes	-	-
ME309187	Laite Beach	KNOX	Yes	Yes	-	Yes	-	-	Yes	-	-	-	Yes	-	-	Yes	Yes	-	-
ME997054	Sandy Beach	KNOX	Yes	Yes	-	Yes	-	-	Yes	-	-	-	Yes	-	-	Yes	Yes	-	-
ME601876	Pemaquid Beach	LINCOLN	Yes	Yes	Yes	-	-	-	-	-	-	-	-	-	-	Yes	-	-	-
ME202938	Half mile Beach	SAGADAHOC	Yes	Yes	Yes	-	-	-	-	-	-	-	-	-	-	Yes	Yes	-	-
ME202939	Lagoon Beach	SAGADAHOC	Yes	Yes	Yes	Yes	-	-	-	-	-	-	-	-	-	Yes	Yes	-	-
ME202937	Mile Beach	SAGADAHOC	Yes	Yes	-	Yes	-	-	-	-	-	-	-	-	-	Yes	Yes	-	-
ME416997	Popham - Center Beach	SAGADAHOC	Yes	Yes	-	-	-	-	-	-	-	-	-	-	-	Yes	Yes	-	-
ME340149	Popham - East Beach	SAGADAHOC	Yes	Yes	-	-	-	-	-	-	-	-	-	-	-	Yes	Yes	-	-

Go To: Address or Location Type state, zip, or address

Go

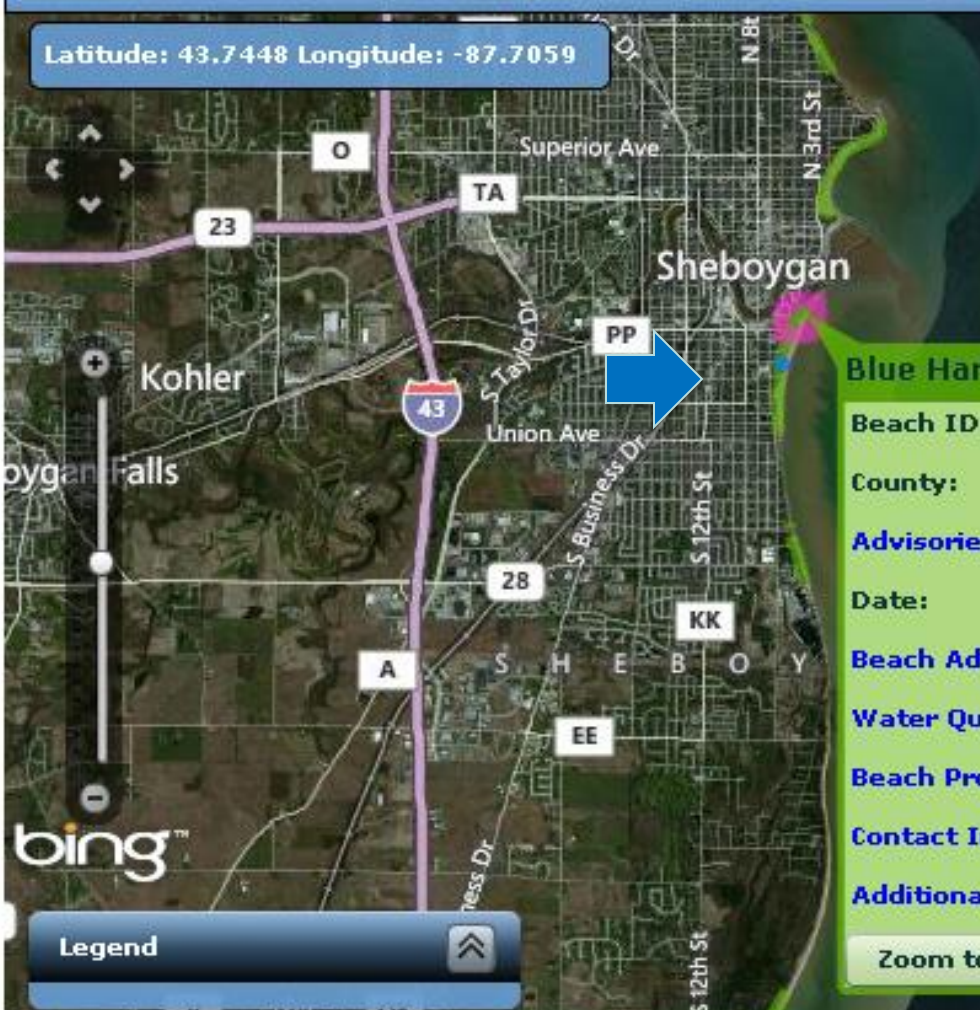
Back

Latitude: 43.7448 Longitude: -87.7059

Streets

Imagery

To



Blue Harbor Beach

Beach ID: WI252842

County: SHEBOYGAN

Advisories and Monitoring Data No advisory or closure

Date:

Beach Advisory and Closing Information

Water Quality

Beach Profile

Contact Information

Additional Reports

Zoom to Beach

Alaska, Hawaii, US Ter

For additional maps of Office of Water program data, see the EPA My WATERS Mapper page.

To p of hgs

# Water Quality Report (data from WQX/STORET)

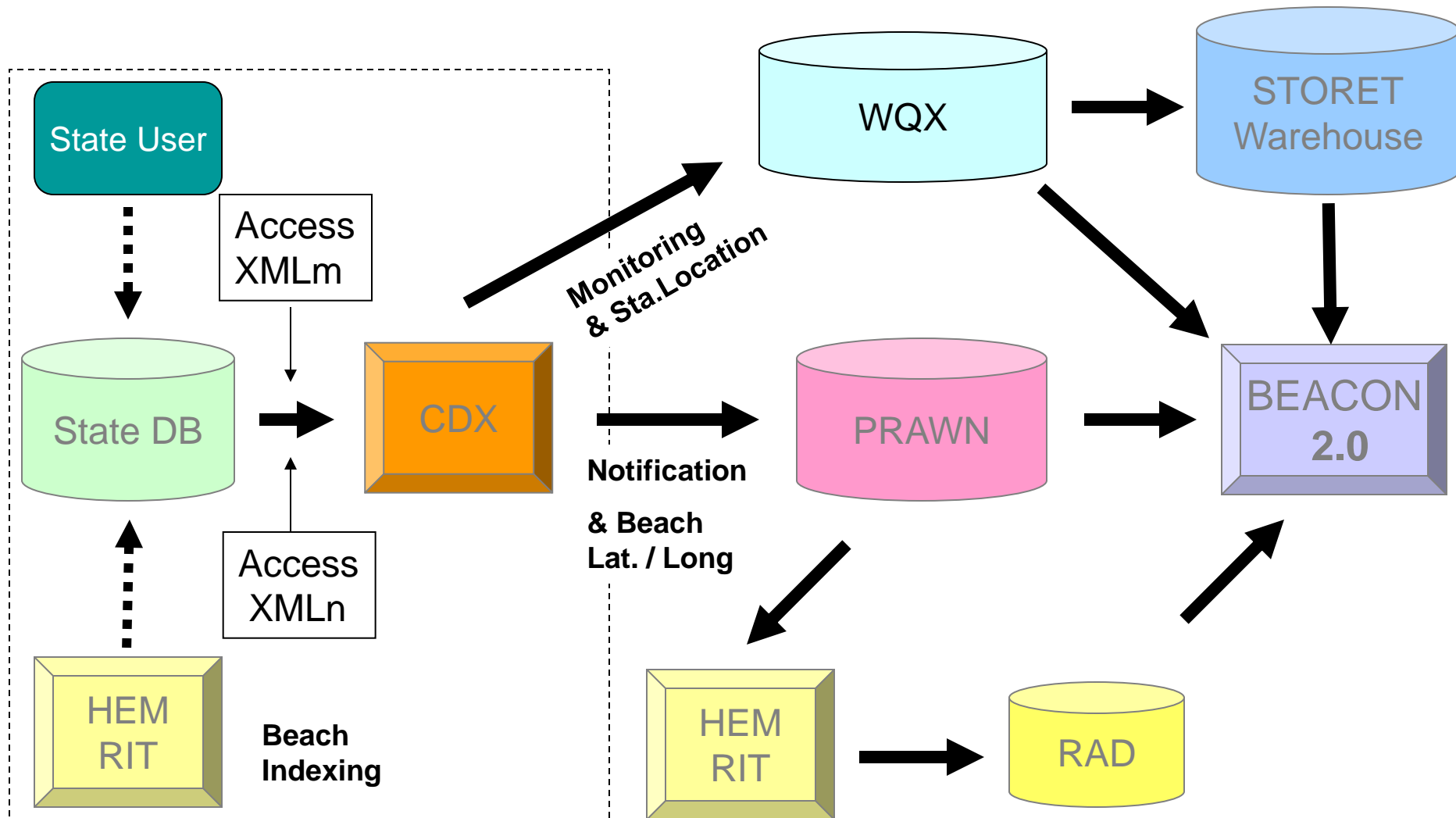
Go Reports 1. Primary Report Actions [Bottom of page](#)

- Display Beach Id in 'WI400905'
- Status in 'Active, Advisory, Closure'
- Year in '2012'
- State Code

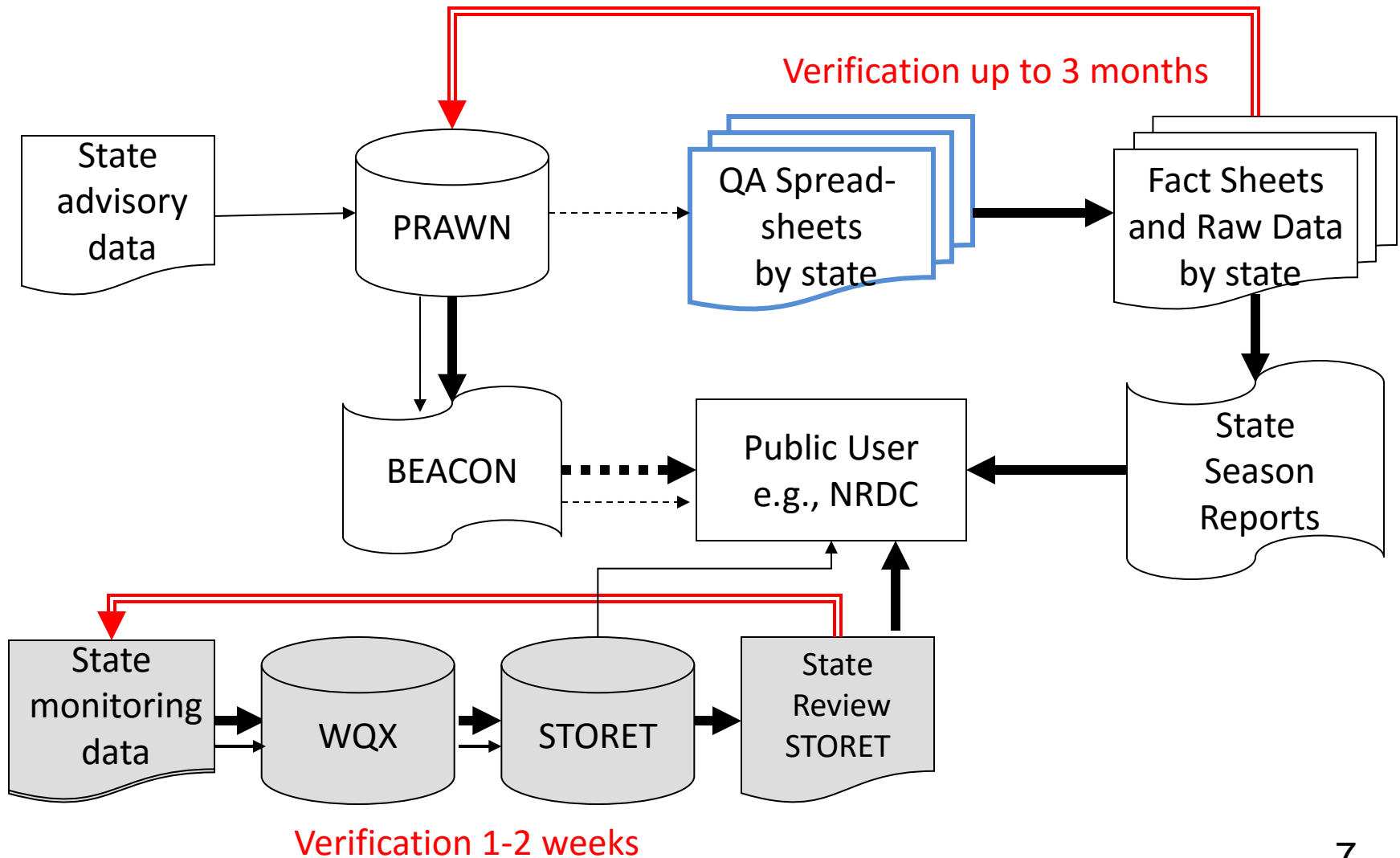
State Code : WI

Beach ID	Beach Name	Station ID	Station Name	County Name	Identifier	Start Date	Start Time	Zone Code	Activity Type Code	Characteristic Name	Result Value	Result
WI400905	Southport Park Beach	05938129	Center of beach	KENOSHA	1249091	08-27-2012	09:30:00	CST	Sample-Routine	Escherichia coli	18	
WI400905	Southport Park Beach	05938129	Center of beach	KENOSHA	1248827	08-20-2012	09:30:00	CST	Sample-Routine	Escherichia coli	79	
WI400905	Southport Park Beach	05938129	Center of beach	KENOSHA	1248549	08-13-2012	09:40:00	CST	Sample-Routine	Escherichia coli	16	
WI400905	Southport Park Beach	05938129	Center of beach	KENOSHA	1248203	08-06-2012	08:10:00	CST	Sample-Routine	Escherichia coli	49	

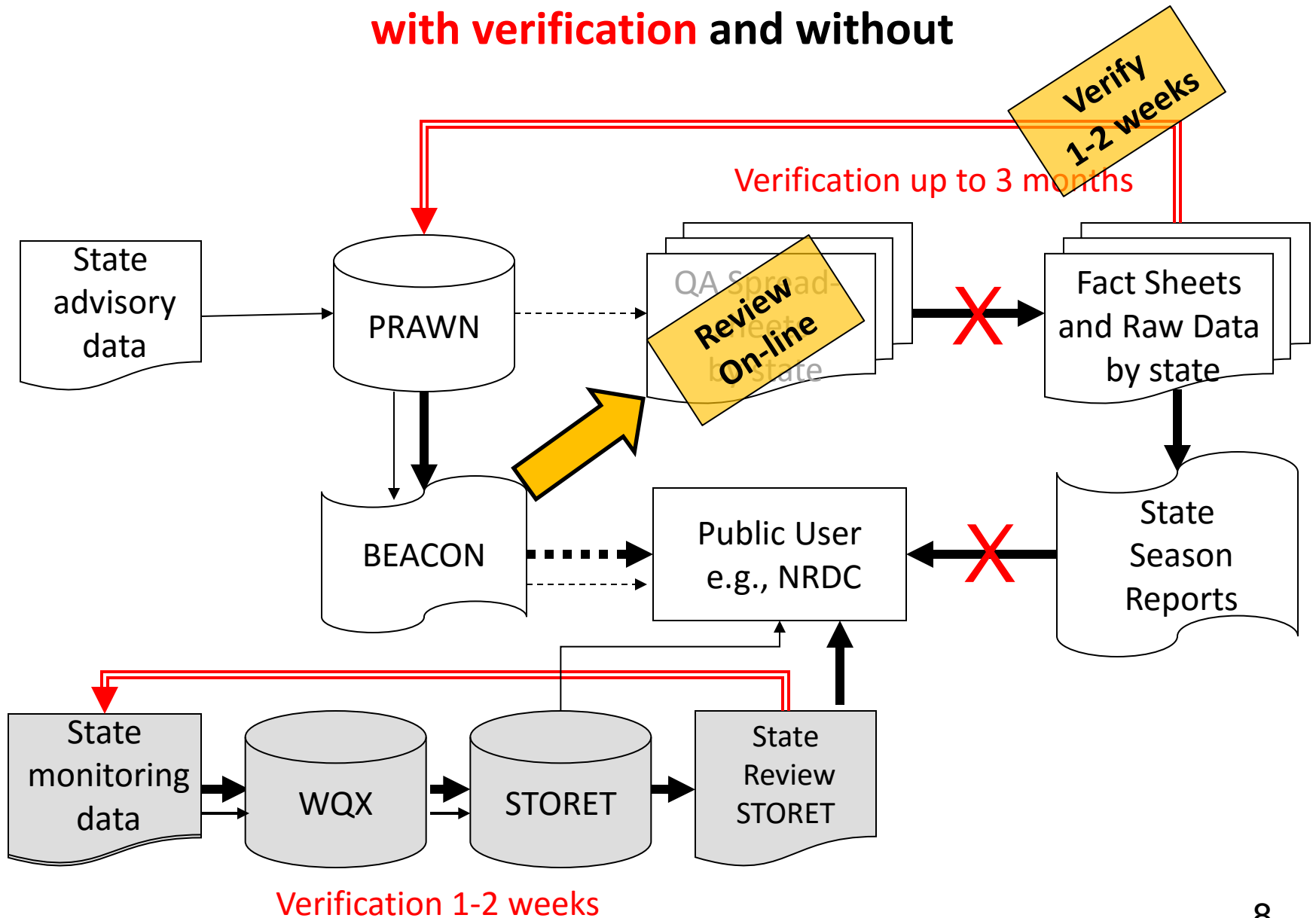
# eBeaches System Data Flow Adaptive Management for QA



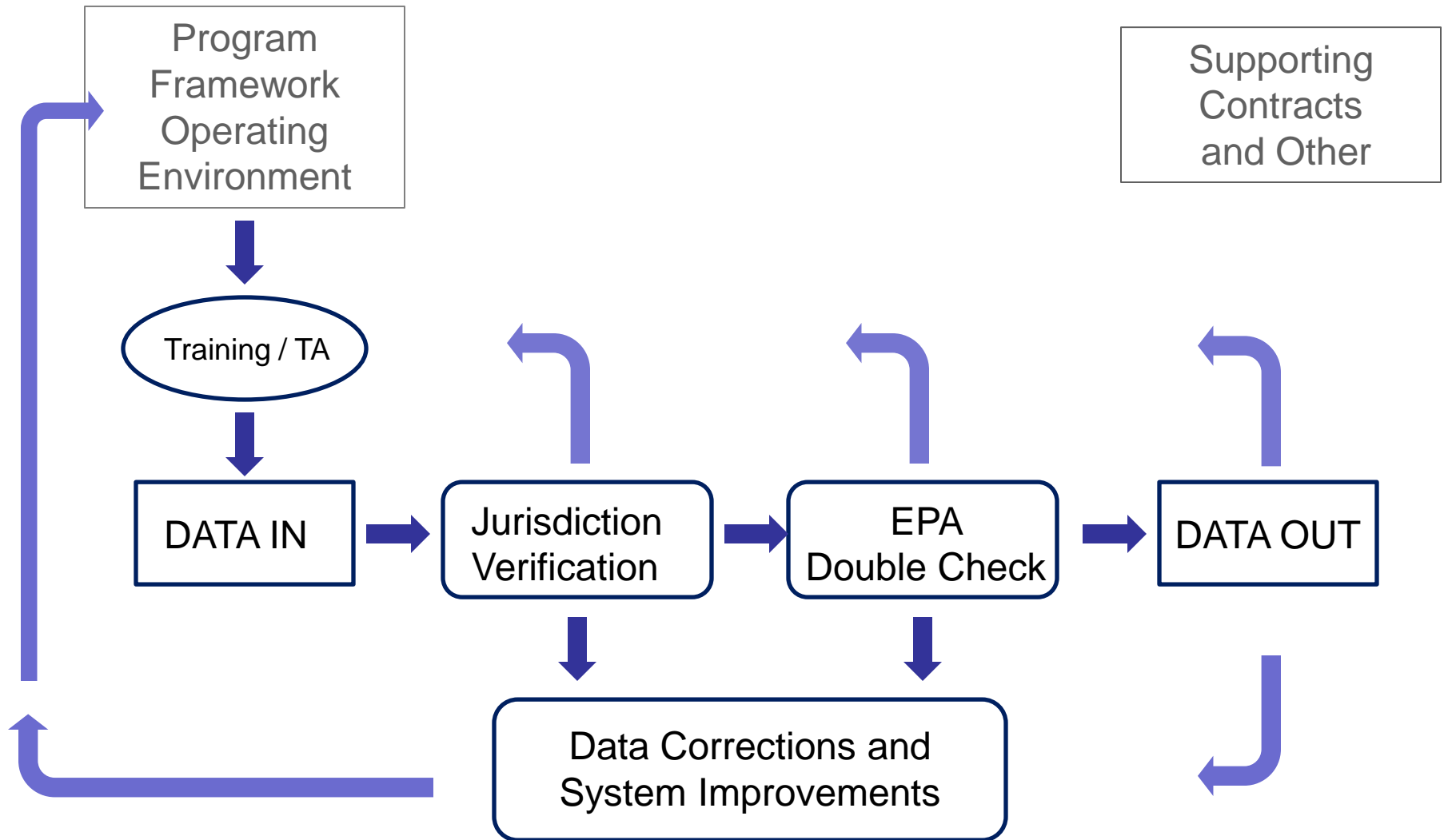
# Flows of State Beach Monitoring and Advisory Data with verification and without



# Flows of State Beach Monitoring and Advisory Data with verification and without



# eBeaches System Data Flow Adaptive Management for QA



**BEACON Report Types**  
**to Expose PRAWN Data Elements**  
(ref. Beach Notification User Guide - December 2011)

Beach  
AttributesBeach  
Monitoring  
FrequencyPossible  
Pollution  
SourcesBeach  
ProfileBeach  
ActionsWater  
QualityDetailed  
#3.

Green = Query select parameter added to reports  
Lower-case "y" are pulled from other reports

**Bold Blue "Y" in box indicates the BEACON Report in which to verify the data element**

**BEACH INFORMATION FIELDS 3.1.3**

Beach Identifier (not editable)	<b>Y</b>	y	y	y	y	y
Beach Name	<b>Y</b>	y	y	y	y	y
Beach Description				<b>Y</b>		
Beach Comment				<b>Y</b>		
State Code	<b>Y</b>	y	y	y	y	
County Name (FIPS Code)	<b>Y</b>	y	y	y	y	
Water Body Name (Enables Great Waterbody Query)				<b>Y</b>		
Water Body Type Code				<b>Y</b>		
Accessibility Type (owner/access)	<b>Y</b>			y		
Accessibility Comment				<b>Y</b>		

**ACTIVITY FIELDS 3.1.5**

Activity Type Code						
Activity Type Name					<b>Y</b>	
Start Date					<b>Y</b>	
Stop Date					<b>Y</b>	
[Duration - calculated]					<b>Y</b>	
Reported					<b>Y</b>	
Reason & Description					<b>Y</b>	
Source & Description					<b>Y</b>	
Indicator & Description					<b>Y</b>	
Monitoring Station ID and name (created in WQX/STORET)				<b>Y</b>		<b>Y</b>
Description & Comment					<b>Y</b>	
Extent Start Measure						





# QUESTIONS?

Bill Kramer  
Kramer.bill@epa.gov

