

Environmental Information



EN2015

The GeoPlatform: Current Activities and Path Forward

Harvey Simon, *US EPA*

2015 Exchange Network National Meeting

Supporting the Business of Environmental Protection

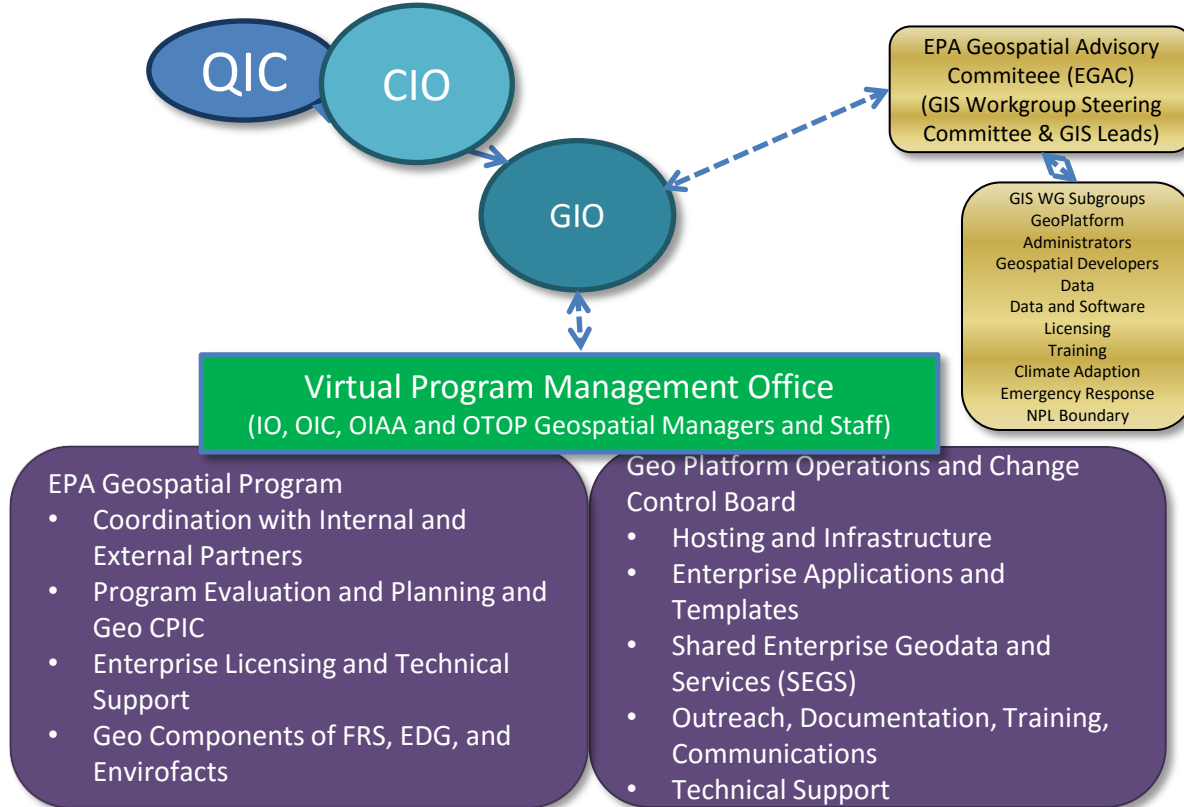
September 29–October 1, 2015
Sheraton Philadelphia Society Hill Hotel
Philadelphia, Pennsylvania

<http://www.exchangenetwork.net/en2015>

ABSTRACT

The EPA GeoPlatform provides a common infrastructure for sharing geospatial data and applications across EPA, leverages existing license agreements and commercial off the shelf software, and fosters innovation and reuse of services and code. The technical components of the EPA GeoPlatform include a suite test/development and production virtual servers in EPA's hosting environment, a cloud-based collaboration environment based on EPA's ArcGIS for Organizations subscription, EPA's Environmental Dataset Gateway, the Facility Registry Service (FRS), and a database of shared geospatial data services (SEGS). The GeoPlatform has been in operation in since May of 2012 and has grown from an initial ~400 test users to over 2700 users and supports over 70 EPA web mapping applications and has been used to create and share thousands of webmaps and data services by EPA staff. The success of the GeoPlatform is largely driven by the governance, support, procedures and training. This talk will share how EPA has evolved this shared infrastructure to support the Agency's mission, how it relates to the National Geospatial Platform effort and how state agencies can use a similar approach to make critical data and applications available for re-use.

EPA Geospatial Program



EPA GeoPlatform

- A shared technology and governance framework, which encompasses a community of expertise as well as a suite of geospatial tools, data and services to coordinate and consolidate mapping activities, applications development and data management across the Agency.



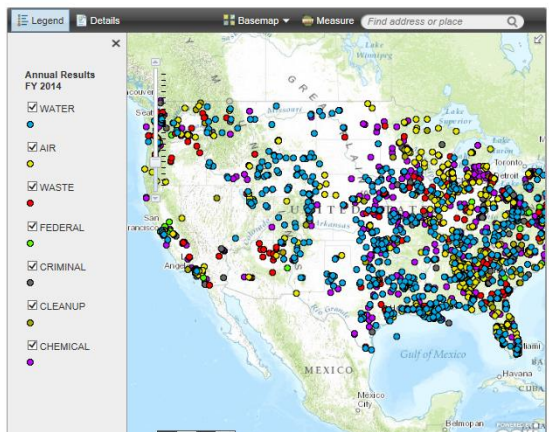
Background

- How the EPA GeoPlatform evolved
 - Built on existing tools, technologies and support infrastructure
 - Started with core business line pilots
 - Extensive communication, outreach and user needs analysis
 - Iterative, quickly discard what fails, build on successes
 - Development and implementation of governance process and funding model
 - Test bed for National Geospatial Platform effort.

Examples

- EJSCREEN - <http://www2.epa.gov/ejscreen>
- GeoGrants
- Clean Power Plan Story Maps
<http://cleanpowerplanmaps.epa.gov/cpp/>
- NEPAassist -
<http://nepassisttool.epa.gov/nepassist/entry.aspx>
- Annual Enforcement Results Map –
<http://www2.epa.gov/enforcement/enforcement-annual-results-concluded-cases-map-fiscal-year-fy-2014>

Find address or place: Enter city and state. Press [Enter] on your keyboard.



Exa

Home Gallery Map Scene Groups My Content My Organization Harvey

Gallery

My Favorites My Organization's Featured Content Esri Featured Content

EPA GeoPlatform Online Featured Content

Sort By: Most Recent

Show: All, Maps, Layers, Scenes, Apps, Tools, Files

Search the website or visit the ArcGIS Marketplace

- MAHBoundary
- Potomac Highlands
- PHGISProjects
- Best Management Practices
- San Francisco Bay Delta Watershed Map
- TX and LA Climate Change Projects
- Cleanups in My Community
- Concluded Enforcement Cases FY 2012
- Wilcoxon Basin

- EPA GeoPlatform
- Enterprise Licenses
- GIS Community
- Policies
- Get Help

EPA GeoPlatform Data Publishing: GIS Analyst/Developer Workflow

Click a step below for more information. Or, click here to view all steps.

- Step 1: Understand the Environments**
- Step 2: Process/Implement in a Development Environment**
- Step 3: Deploy your Content to Selected Environments**
 - GeoPlatform Hosting Environment Staging Production
 - EPA Data Download Site
 - EPA Clip N Ship Application
 - EPA GeoPlatforms Online
 - EPA Environmental Dataset Gateway
- Step 4: Publish Metadata and Create Linkages Between Published Datasets**
- Step 5: Obtain Approvals and Finalize Deployment**

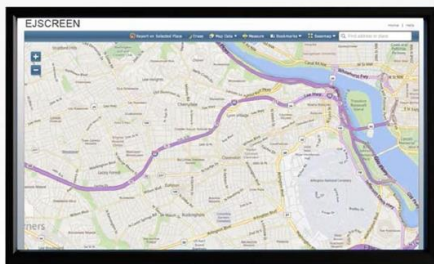
Welcome to the EPA GeoPlatform Data Publishing Workflow

This web page provides a high-level Process for EPA GIS Analysts and graphic to the left to view the info all steps.

A high-level overview of the EPA G Managers is available here.

This website is a simplified view of Data Publishing Standard Operat Analysts and Developers review the not done so already.

If you have questions regarding the information presented at this



EJSCREEN: EPA's Environmental Justice Screening Tool

EPA Environmental Dataset Gateway (EDG)

Connecting EPA's Environmental Resources

HOME ABOUT SEARCH BROWSE DATA REUSE RESOURCES

Welcome to EPA's Environmental Dataset Gateway (EDG). Use the EDG to find and access EPA's environmental resources. EPA employees or contractors may login at the top right to see all EDG content. [Get help logging in.](#)

Download the latest [EPA Metadata Editor](#) and attend upcoming [EME Training Sessions](#).

[Contact the EDG Team](#)

Access EPA's Geospatial Resources

Search EPA's Data

Other Ways to Find EPA's Data: [Advanced Search](#) [Browse EPA Records](#)

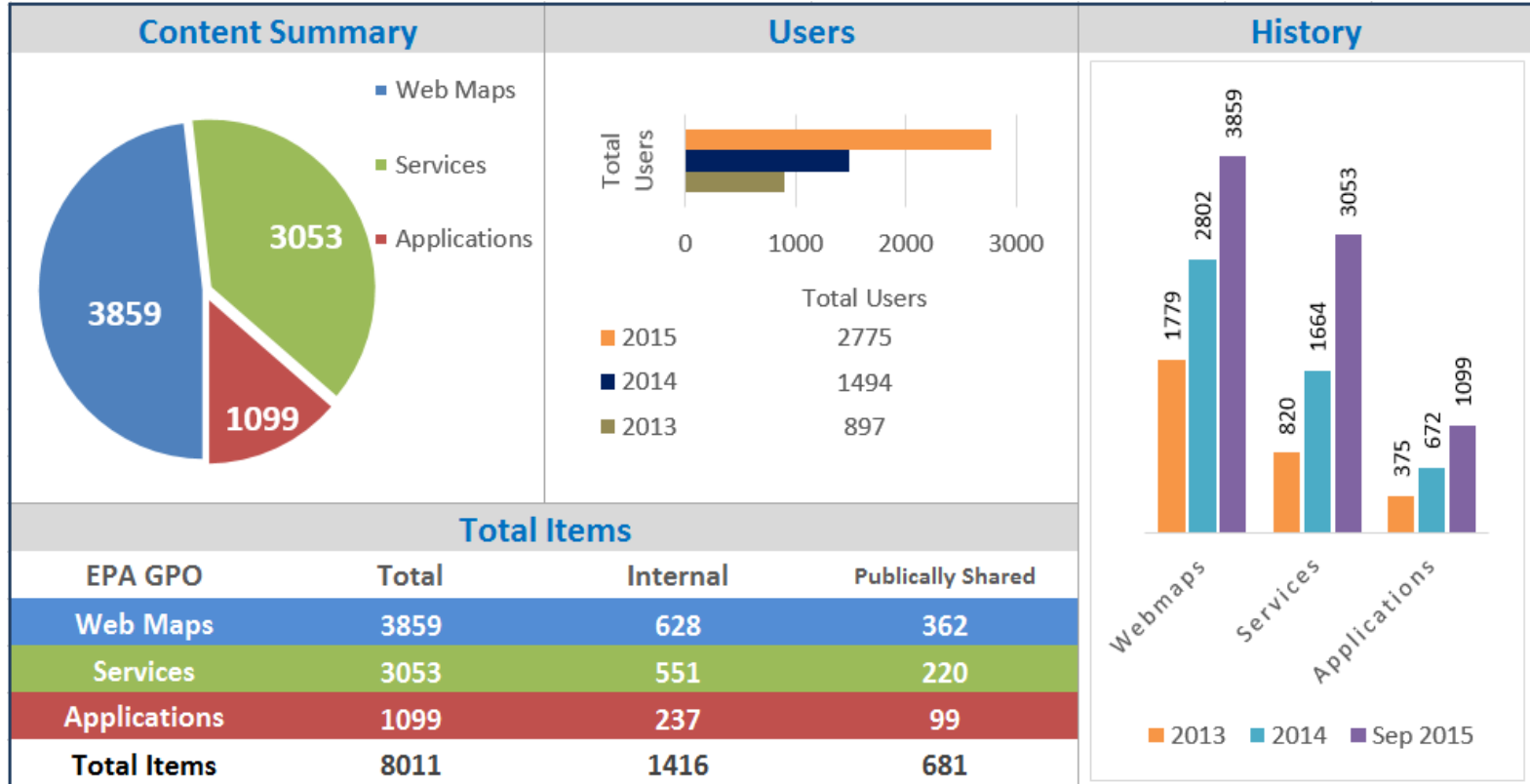
Do More with the EDG

- EDG Download Site**
Use EPA's Data Access Project
- Reuse Components**
REST, GeoRSS, Gadgets, more...

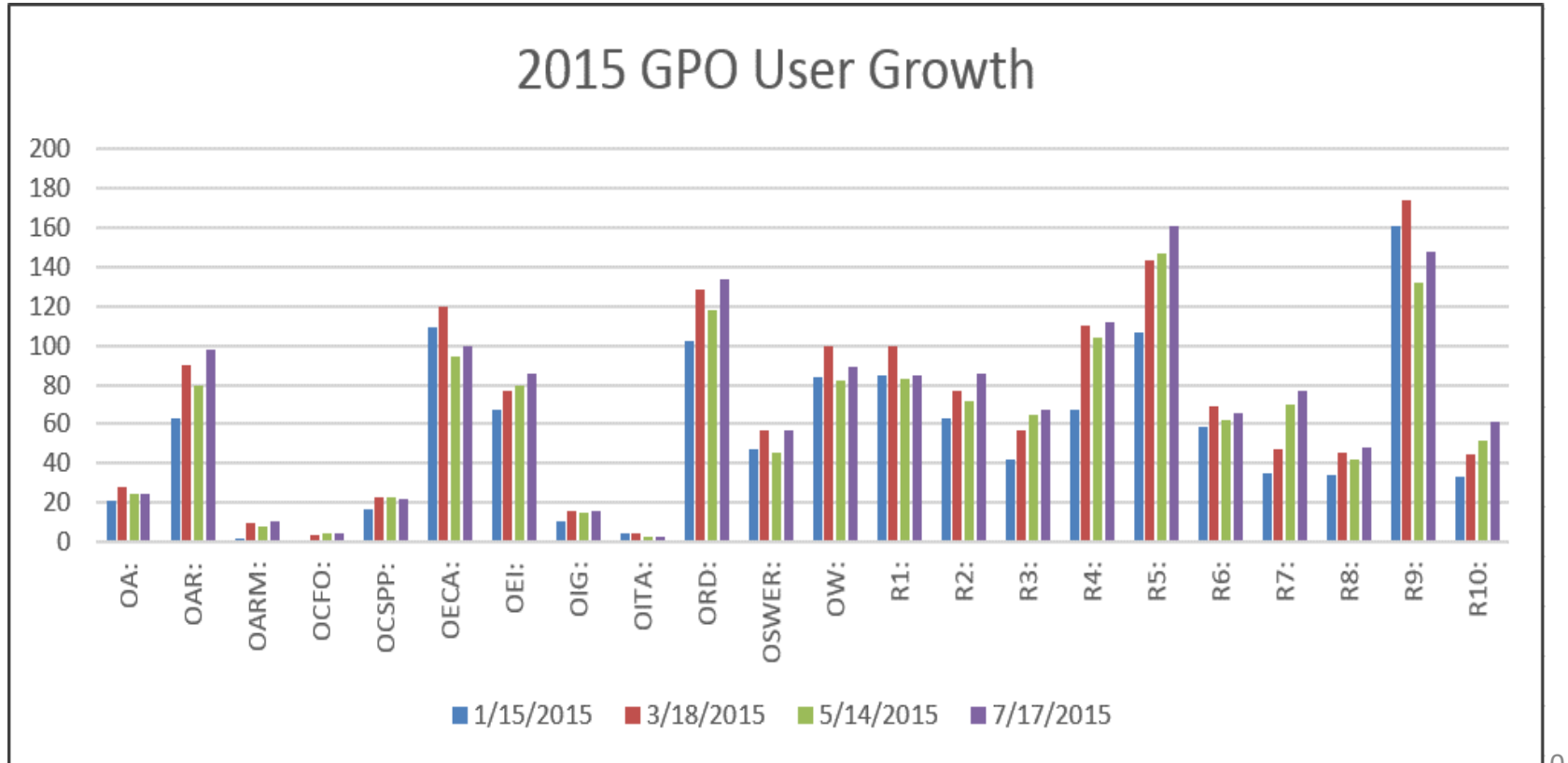
Recent Enhancements

- Single-Sign On Integration
- Esri Maps for Office
- Establishment of a Developer Community
 - Focus on standard templates and widgets, code re-use and mobile first
- Training and outreach for multiple audiences
- Connection to other platforms and tools through APIs

Utilization and Growth



Utilization and Growth



Future Direction

- Expand and Enhance Security Model
- Integration with EPA's Data Visualization/Big Data Platform development efforts
- Coordination with and use of National Geospatial Platform
- Further support for open data and code re-use
- Integration with E-Enterprise portal
- Mobile application development

Collaboration with States

- Sharing information and lessons learned
- Support for open data
- FRS enhancements and collaboration as keystone to E-Enterprise