

Environmental Information



EN2015

E-Enterprise Portal

Shana Harbour, US EPA, OCFO E-Enterprise

2015 Exchange Network National Meeting

Supporting the Business of Environmental Protection

September 29–October 1, 2015
Sheraton Philadelphia Society Hill Hotel
Philadelphia, Pennsylvania

<http://www.exchangenetwork.net/en2015>

ABSTRACT

This presentation provides an overview of the E-Enterprise Portal. The Portal will provide a modern, efficient, and consolidated entry point for business and citizens to locate, obtain access to, and interact with EPA, state and tribal environmental programs and web resources. The Portal is being developed in phases with Phase 1 launching at EN2015.

The Portal Concept

- To enhance user service - a goal of E-Enterprise that is central to the portal concept.
- To provide a consolidated entry point for businesses and the public to:
 - Efficiently locate,
 - Obtain access to, and
 - Interact with relevant EPA, state, and tribal environmental programs and web resources.

Why Do We Need a Portal?



- Environmental programs have been developed over time under statutes that have used different approaches and funding mechanisms to address varied environmental problems.
- There have been dramatic improvements in environmental protection and systems that support them but challenges remain.
- Stakeholder communities expect programs to be modern, efficient, and provide better service.

Progress to Date



- A Portal IPT Work Group was chartered by the ENLC as a sub group of the E-Enterprise Architecture IPT
 - Main objective is to support the scoping process
 - Conducted a comprehensive outreach effort
 - Business requirements and concept of operation
- Phase 1 developed using Agile

Outreach Effort

- Federal Register Notice posted on January 16, 2015
- Over 500 attendees at various outreach venues
- More than 200 companies represented
- Over 40 NGOs participated
- Approximately 60 federal, state, and local governments
- 13 tribes or tribal nations represented
- 7 large scale webinars conducted from February to April
- Tribal consultation
- In-person roundtables
- EPA internal meetings



Business Requirements

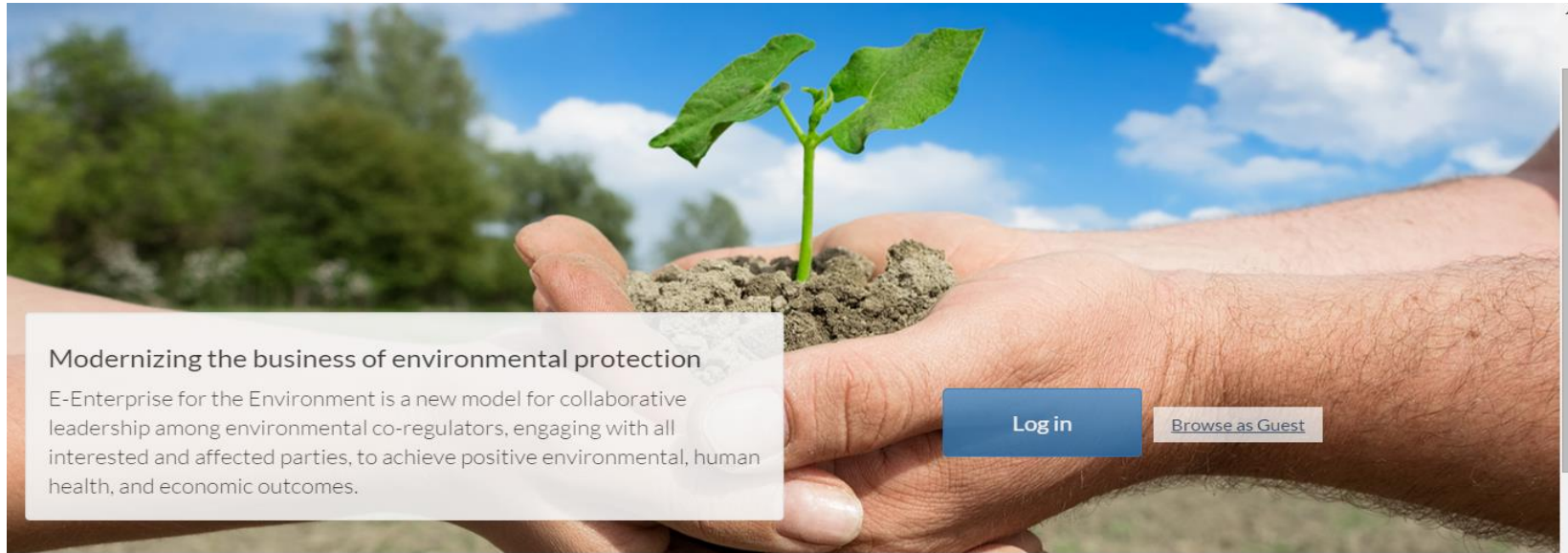
- Captured 122 high-level business requirements
- 45 requirements validated key portal concepts from the E-Enterprise Conceptual Blueprint
- Majority of requirements are functional in nature but also include usability, security/privacy, interoperability, operational, and technical requirements
- Categorized by *functionality type* (e.g. compliance assistance, facilities information, data access, etc.) and *user group* (e.g. regulated entities, tribal groups, academics, etc.)

Key Themes Captured



- For Co-regulators
 - Interoperability
 - Relationships with existing programs and systems
- For Regulated Entities
 - Data accuracy and reconciliation
 - Reporting and permit processing online
- For the Public
 - Improved access to environmental information
 - Access to raw data

E-Enterprise Portal Phase 1



Modernizing the business of environmental protection

E-Enterprise for the Environment is a new model for collaborative leadership among environmental co-regulators, engaging with all interested and affected parties, to achieve positive environmental, human health, and economic outcomes.

Log in

[Browse as Guest](#)

Streamlining processes

Trusted information

Enhanced productivity

STREAMLINING PROCESSES

E-Enterprise for the Environment simplifies regulation by streamlining and modernizing the implementation of our environmental programs.



Use Cases for Phase 1

Use Case	Release 1 Approach
My Environment Service for Public Users	<ul style="list-style-type: none">• My Air Quality, based upon user's location preferences
"My Reporting" Service for regulated entities to organize on-line reports and submissions	<ul style="list-style-type: none">• Created reusable service for EPA and States to share To-Do List and Status items
Federal Lead-based Paint Program (FLPP)	<ul style="list-style-type: none">• Provides status of certification applications, ability to download payment receipt and certification
Compliance and Emissions Data Reporting Interface (CEDRI)	<ul style="list-style-type: none">• Provides industry users and state reviewers details regarding submission status
Continuous Air Monitoring Data Flows	<ul style="list-style-type: none">• Village Green benches
Include existing EPA widgets	<ul style="list-style-type: none">• Facility Registry System

Workbench for Regulated Entities



Modernizing the business of environmental protection

[My account](#) | [FAQs](#) | [Log out](#)

Home

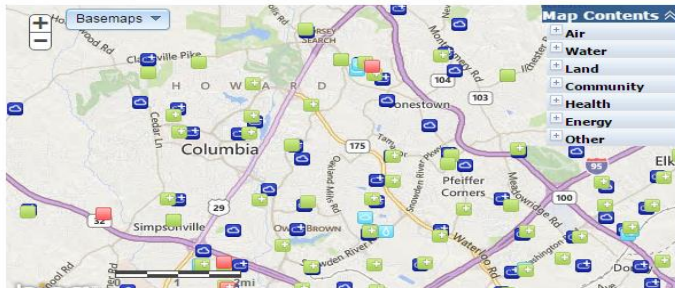
Set location **Columbia, MD**

[Questions?](#)

CDX Facility Management

Program

My Environment Mapper



To Do

[All Items](#) | [This Week](#) | [Next Week](#) | [Beyond](#)

#	Item	Domain	Due
1	Review Air Emissions Report (Part 60, Subpart Da) COMMARCO IBS DETAILS	CEDRI	08/26/2015 PUBLISH DATE
2	Review Air Emissions Report (Part 60, Subpart Da) US JOINER, LLC DETAILS	CEDRI	08/27/2015 PUBLISH DATE
3	Review Air Emissions Report (Part 60, Subpart Da) US JOINER, LLC DETAILS	CEDRI	08/27/2015 PUBLISH DATE

1 of 2

Progress Tracker

Domain

Workbench for the Public

Home

Set location **Washington, DC**

Questions?

My Environment Mapper



My Air

Air Quality Index

AirNow Maps



Interactive Maps

46 Maps - [Browse gallery...](#)

Filter By **All** Air Water Land



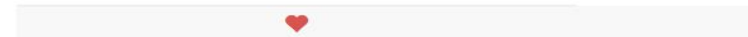
Hawaii State Events Web Map
Hawaii State Events Web Map Application for EPA Public Web...
USEPA GeoPlatform Online



Marine Protected Areas: Effective Tools for...
This story map highlights the data within NOAA's Marine...
NOAA

Favorite Links

[Edit Profile](#)



Beyond Phase I

- Establish long-term joint governance for the Portal
- Start to integrate State and tribes data into the Portal
- Interoperability with States and tribes
- Continue to seek user feedback and requirements
- Continue to use Agile approach to add functionality to the Portal
- Integrate the Local Government Portal

E-Enterprise Portal

Questions?

harbour.shana@epa.gov
www2.epa.gov/e-enterprise